

First, attach the wheels and the rubber feet to the base (see page 2).

Second, fasten the base to the upright as shown below.

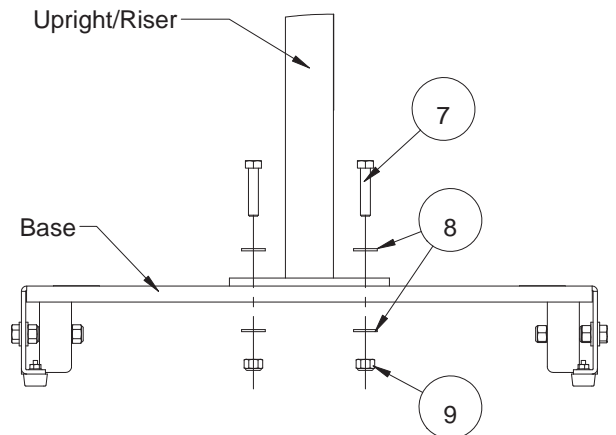
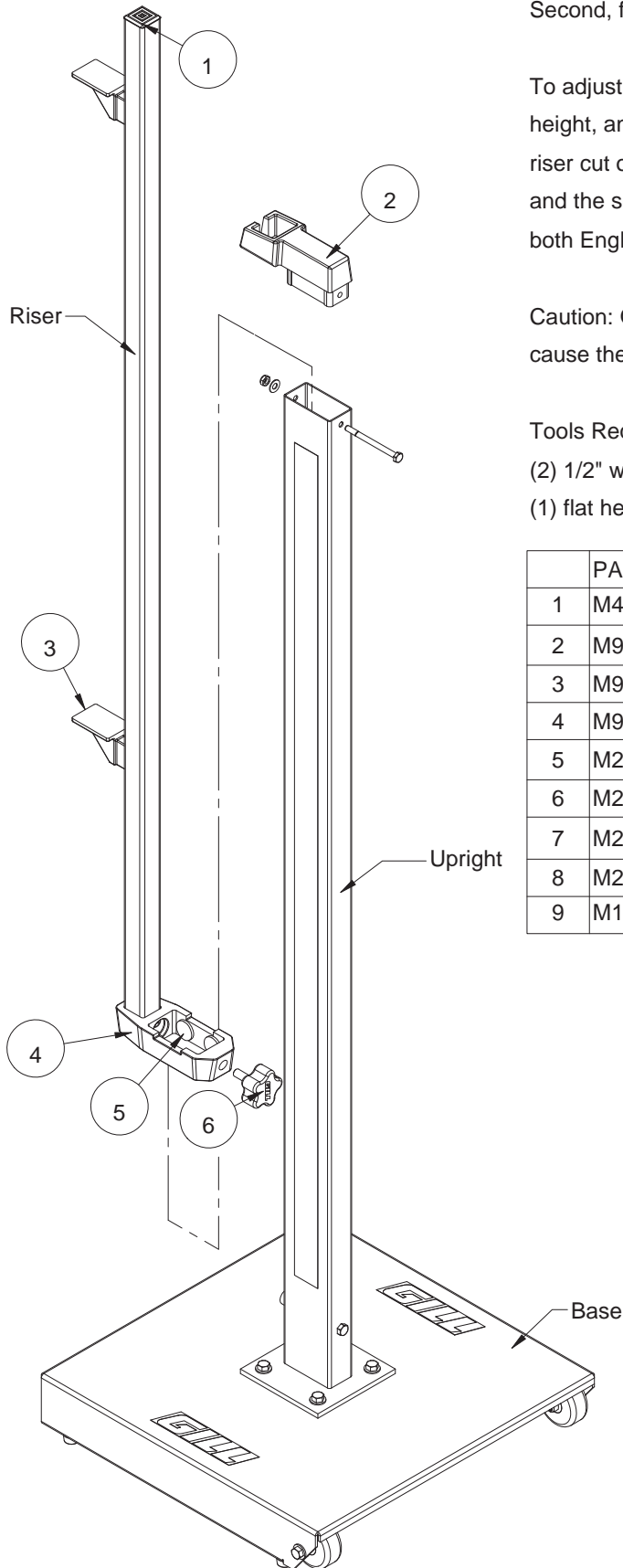
To adjust the height of the riser, loosen the knob, position the riser to desired height, and re-tighten the knob. Read the height scale at the top of the lower riser cut out. The scale on one side of the upright is for the lower bar rest and the scale on the other side is for the higher bar rest. The scale reads in both English Standard and Metric measuring systems.

Caution: Over tightening the knob can result in damaged threads, which may cause the knob to seize in place, and may require a new knob and/or riser.

Tools Required:

- (2) 1/2" wrenches
- (1) flat head screwdriver

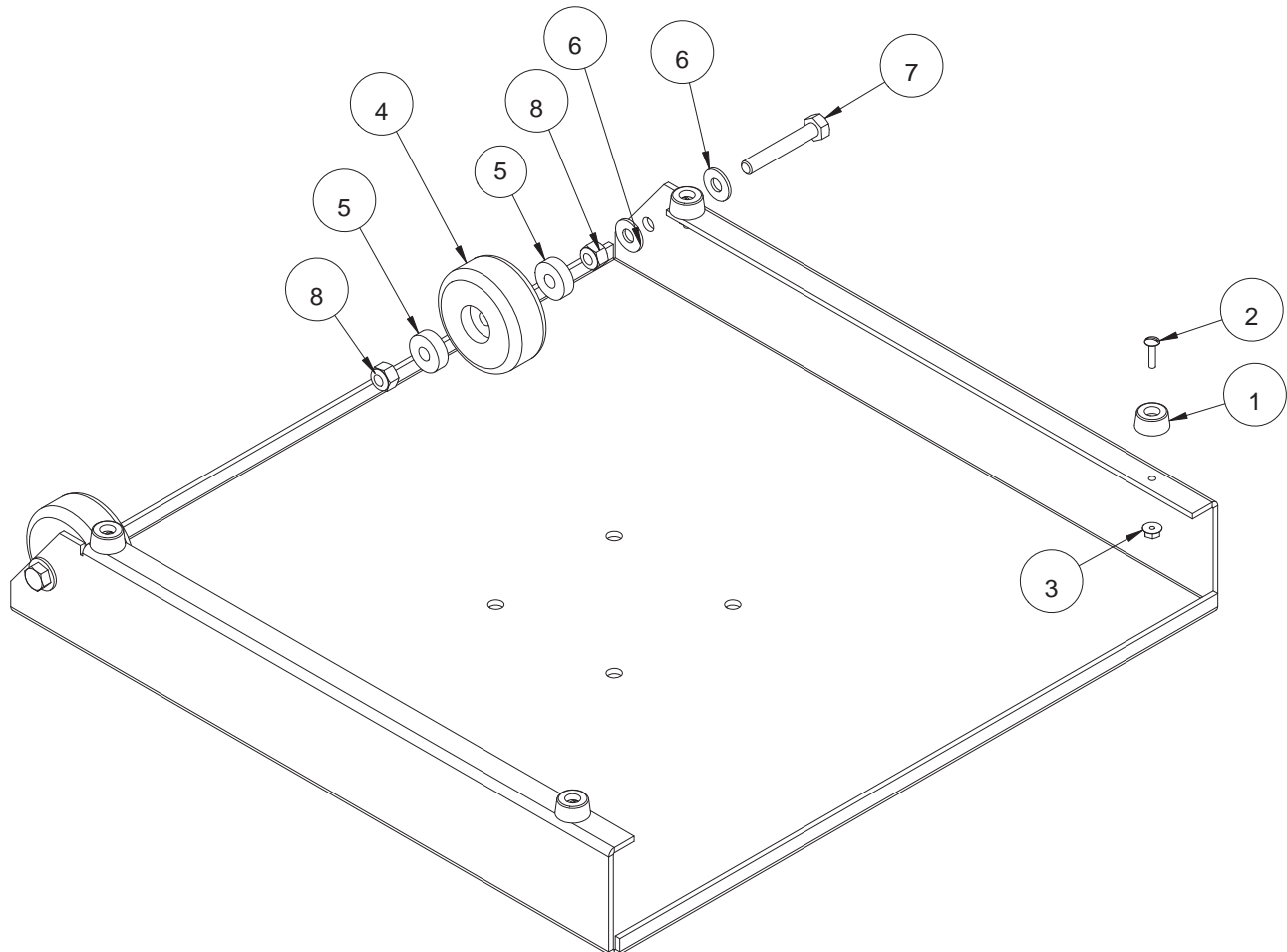
	PART #	DESCRIPTION	QTY.
1	M428	1.25" SQ End Plug, BLK (fits 11GA)	1
2	M910	RAW UPPER RISER GUIDE-705/711/712	1
3	M912	Cast Aluminum Bar Rest	2
4	M911	RAW LOWER RISER GUIDE-711/712	1
5	M2015	Felt Dot, 1" dia x 1/8" thick, adhesive backed	5
6	M2752	KNOB 3/8 X 1" BLACK TPE W/LOGO	1
7	M2207	5/16"-18 x 1.5" Hex Bolt	4
8	M2273	Washer, Flat, 5/16	12
9	M1254	5/16"-18 Nylock Hex Nut	8



Part #	Description	Qty
1	M726 Black Rubber Foot	4
2	M2229 6-32 x 5/8" Screw, Slotted Truss Head	4
3	M2228 6-32 Flange Whiz-Nut	4
4	M718 61 mm skate wheel	2
5	M717B Ball Bearing	4
6	M2273 Washer, Flat, 5/16	4
7	M2834 5/16"-18 x 2" Hex Bolt Full Thread	2
8	M1254 5/16"-18 Nylock Hex Nut	4

Fasten the rubber feet (1) to the bottom of the base with a screw (2) and nut (3)

To assemble the wheels, first feed the axle bolt (7) through the washers (6) and the hole in the side of the base. Secure it in place with a nylock nut (8). This nut must be fully tightened. Slide the wheel (4) with installed bearings (5) onto the axle bolt and secure it in place with a second nylock nut. Do not over tighten the nut holding the wheel on the axle. The nut should be tightened so that the nylon insert is fully engaged, but not to the point where the nut touches the wheel. The wheel should spin freely.

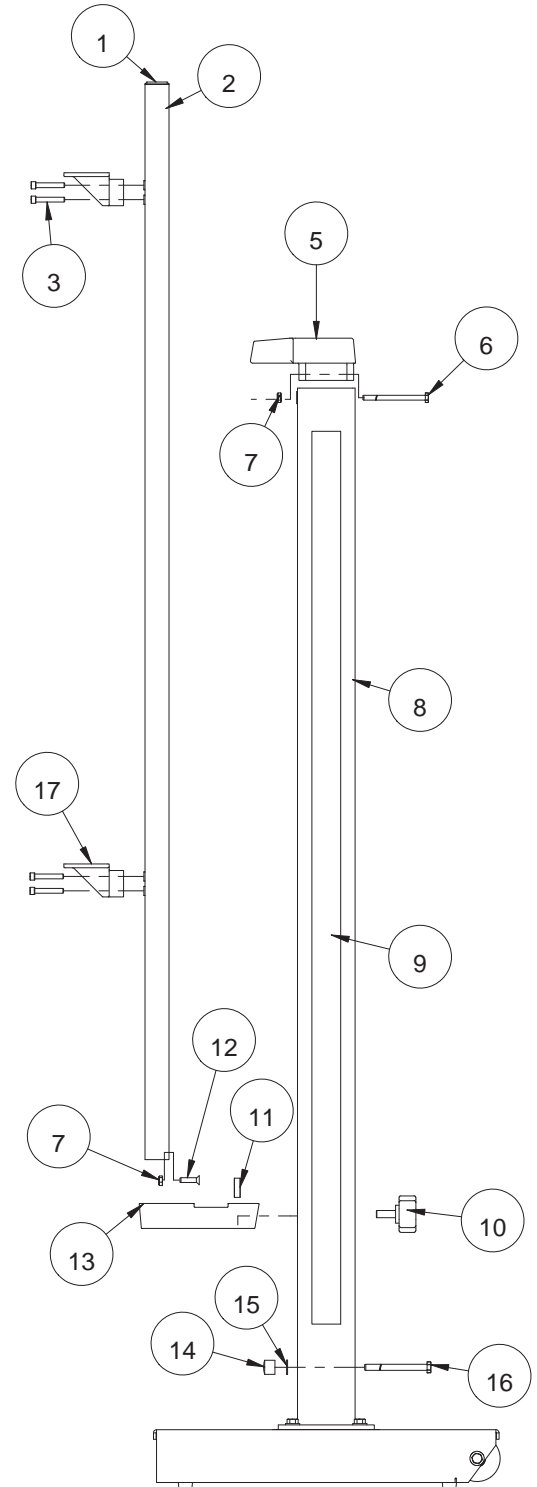


Riser assembly will ship assembled. However, there may be circumstances that require knowledge of the inner working parts. These parts are called out in the drawing to the right.

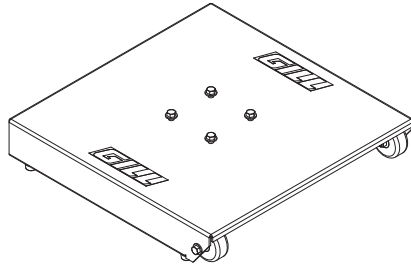
If completely disassembled, the standard should be reassembled as follows:

- 1: Attach lower riser guide (13) to the riser (2) by inserting the riser into the small square hold in the guide. Use the flat head phillips screw (12) and the thin nylock hex nut (7) to secure position.
- 2: Place plastic clamping (11) disk into appropriate cut out in lower guide. Stick four adhesive backed felt dots on side walls of larger cutout of lower guide. These will help the riser to glide smoothly while in operation.
- 3: Insert hex bolt (16) through upright (8) and washer (15) and screw into rubber bumper (14).
- 4: Slide riser onto upright, making sure lower guide is on the bottom. Secure in place with knob (10).
- 4: Slide upper guide (5) onto riser, and then fit into top of upright. Use the hex bolt (6) and thin hex nut (7) to fix position.
- 6: Attach bar rests (17) to riser with cap screws (3).

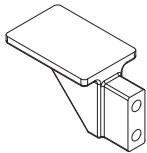
	PART #	DESCRIPTION	QTY.
1	M428	1.25" SQ End Plug, BLK (fits 11GA)	1
2	M327	TUBE, AL 1.25SQ X 56 RND CORNER	1
3	M1286	1/4-20 X 1.5" SOCKET HD CAP SCREW	4
4	M2514	WASHER,FLAT, 1/4 SS (18-8 SS)	1
5	M910	RAW UPPER RISER GUIDE-705/711/712	1
6	M1206	1/4-20 X 3.25" HEX BOLT, PLATED	1
7	M1274	1/4-20 NYLOCK THIN HEX NUT	2
8	M194	tube, stl, 1.5 x 3 x 16ga x 54 P+O	1
9	M2320	HJ SCALE DECAL SET W/WARNING	1
10	M2752	KNOB 3/8 X 1" BLACK TPE W/LOGO	1
11	70447	1" CLAMP PAD-PLASTIC	1
12	M1287	1/4-20 X 1" Phillips Flat Head Screw SS	1
13	M911	RAW LOWER RISER GUIDE-711/712	1
14	M781	FEMALE RBR BMPR #RB51645	1
15	M2591	Washer, Flat, 5/16 SS, .75" OD x .34" ID x .045"	1
16	M2288	5/16 X 3.25" HEX BOLT, PLATED	1
17	M912	Cast Aluminum Bar Rest	2



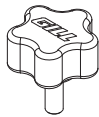
P70505
Folded Base with wheels



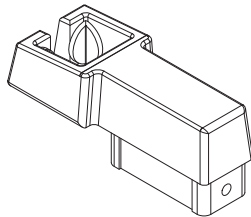
M912
Replacement Bar Rest



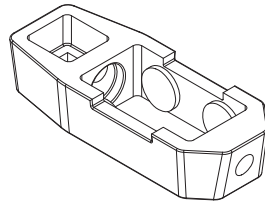
M2752
Knob



P70443
Replacement Upper Riser Guide

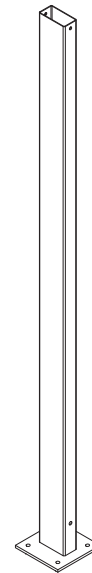


P70444
Replacement Lower Riser Guide



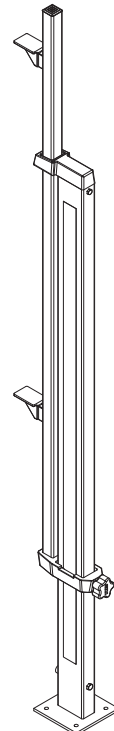
P70560
Replacement Hardware
for a single standard

P70520
Upright



P70540L
Upright and Riser
Left

P70540R
Upright and Riser
Right



THIS WARNING IS GIVEN IN COMPLIANCE
WITH CALIFORNIA'S PROPOSITION 65:

WARNING

This product contains chemicals known to the
State of California to cause cancer, birth defects
or other reproductive harm.